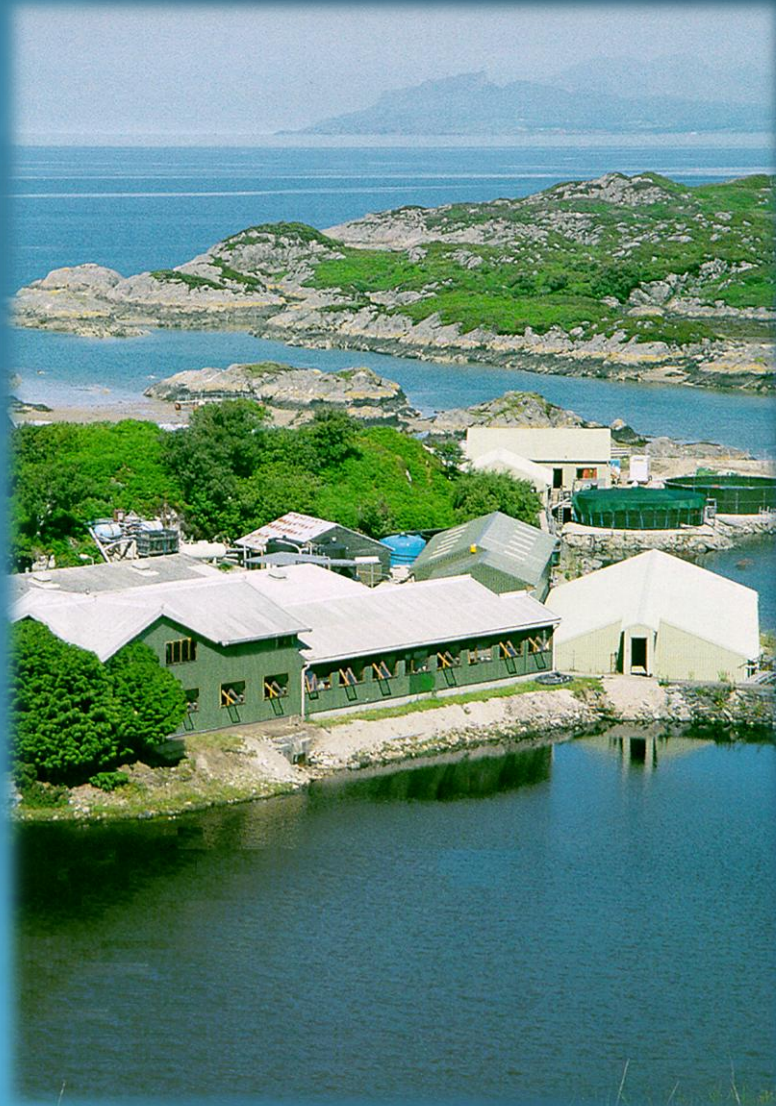


# Ardtoe Marine Laboratory

Viking Fish Farms Ltd

*Driving innovation in Aquaculture and  
the Marine Sciences*



Viking Fish Farms Ltd

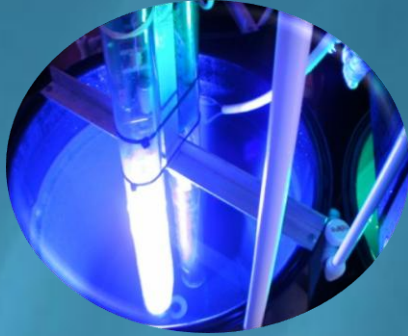
Ardtoe Marine Laboratory, Ardtoe, Acharacle, Argyll PH36 4LD, Scotland

Tel: +44(0)1397 709 270 | fax: +44(0)1967 431 343 email:

[info@ardtoemarine.co.uk](mailto:info@ardtoemarine.co.uk)

[www.ardtoemarine.co.uk](http://www.ardtoemarine.co.uk) also [www.vikingfish.com](http://www.vikingfish.com)

# Our Activities



**Contract and  
funded Research**



**Fry production**

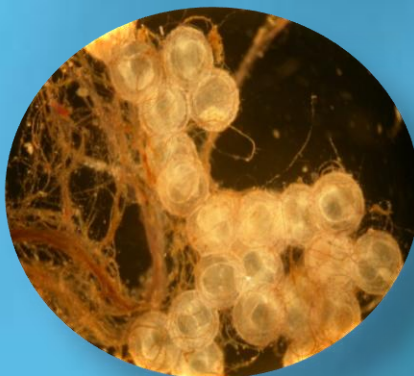
- Turbot
- Cod
- Sole
- Halibut



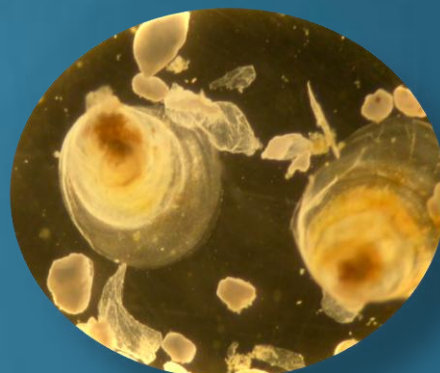
**Training and  
consultancy**



**Wrasse “the  
cleaner fish”  
production**



**Biological  
Supply**

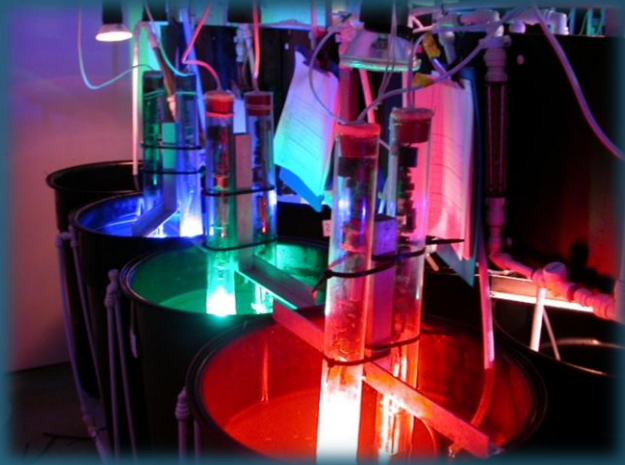


**Oyster and Urchin  
production**

# Aquaculture Pioneers

---

Since 1965 the Ardtoe Marine Laboratory has been internationally recognised as a world leader in the development of marine aquaculture, science and technology. This continuing pioneering spirit and an ethos of innovation, makes Ardtoe today one of the most dynamic and diverse organisations within the marine aquaculture and biosciences sector.



## A bridge between Academia and industry

---



With its unique blend of scientific and commercial expertise, and its unparalleled range of large and small scale marine holding systems, Ardtoe Marine Laboratory provides a wide variety of contract and collaborative research services for industry, government and academia.

## Research Expertise

---



Ardtoe's scientific staff have a broad range of experience and expertise in aquaculture and applied marine science research, as witnessed by the range of current projects listed overleaf.

However, the latter are just a small number of the research projects in which we have been involved over the years, so if you think that we might be able to help you with your research, be that commercial or academic, please feel free to contact us for more information.

## Contract research - Examples of the services we can provide

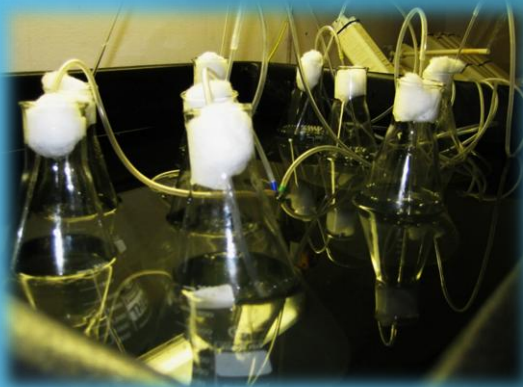


We also hire out of our tanks, offshore site, laboratory space, engineering workshop and other facilities to commercial companies and researchers who may wish to conduct their own commercially sensitive research

We also host undergraduate and post graduate students in academic institutions.

- Fish feed trials
- Rotifers and Artemia diet testing
- Equipment testing
- Product usage and protocol validation
- Disinfection products trials
- Renewable marine energy system testing
- Water quality analyses
- Surveying market opportunities for new aquaculture products and processes
- Industry status reports
- “Stats of the art” reviews
- Development of industry “best practice” standards

## Our resources



- LAN network with wired and wireless broadband
- Library
- Furnished offices with IT equipment
- On site self-catered accommodation
- Engineering workshop
- Microalgae production unit
- Plankton culture unit
- Fully equipped wet and dry laboratory
- Pathology unit
- Feed preparation room and freezer and chiller storage
- Water chemistry & data logging equipment
- Video monitoring and recording facilities
- Captive finfish breeding stocks include turbot, sole, cod, haddock, halibut and ballan, goldsinny and corkwing wrasse
- Breeding stocks of shellfish currently include Pacific and native oysters, and sea urchins
- Stocks of juveniles of all the above species are routinely available
- Master cultures of various species of marine micro and macroalgae
- Rotifer master cultures

## Funded Research

---

As well as carrying out its own in-house funded research, and industrial research collaborations, Ardtoe Marine Laboratory is directly involved in a wide range of R&D projects supported by funding from the European Commission, the European Regional Development Funds, the Scottish Aquaculture Research Forum, and Highlands and Islands Enterprise.

### Present Multinational collaborative projects

**eFishent**: Improving feeds and feed management practices for the European sea bass production industry (EU FP7). [Project web page](#)

**CleanHatch**: Development of a novel automated system that constantly cleans and disinfects larval rearing and plankton culture tanks and outlet screens (EU FP7). [Project web page](#)

**ProSpawn**: The development of more suitable captive environments for marine finfish breeding stocks in order to encourage more natural spawning and improve their welfare, and thereby improve the quality and quantity of their offspring (EU FP7). [Project web page](#)

**Enrich**: The development of techniques for the hatchery production of grow-out culture of edible sea urchin *Paracentrotus lividus*. [Project web page](#)

**Netalgae**: The development of a network of organisations and enterprises with interest in the seaweed industry in the Atlantic region of the EU, including seaweed farmer and harvesters, researchers, regulators, processors and end-users. (ERDF Atlantic Area Programme) [Project web page](#)

**EcoFish**: Development of methods and technologies for rearing the cleaner fish, *Labrus bergylta*, for use as a biological means of lice control by the salmon farming industry. (ERDF Northern Periphery Area Programme) [Project web page](#)

**Larvanet**: A network of academic and industry partners with the aim of integrating the knowledge about the culture of marine finfish larvae obtained in national and European research projects, and practical experience in order to improve quality of fish larvae used in aquaculture. (EU COST Action) [Project web page](#)

Check out our News and Publication page on our website: [LINK](#)

## Contact information

---

Viking Fish Farms Ltd  
Ardtoe Marine Laboratory, Ardtoe, Acharacle, Argyll  
PH36 4LD, Scotland  
Tel: +44(0)1397 709 270 | fax: +44(0)1967 431 343  
email: [info@ardtoemarine.co.uk](mailto:info@ardtoemarine.co.uk)  
[www.ardtoemarine.co.uk](http://www.ardtoemarine.co.uk) also [www.vikingfish.com](http://www.vikingfish.com)

**Tim Atack - Managing Director**  
**Email: [tim.atak@vikingfishfarm.com](mailto:tim.atak@vikingfishfarm.com)**

Viking Fish Farms Ltd.: UK Company Reg No.: 04450207  
Registered Office: 49 Dahn Drive, Ludlow, Shropshire SY8 1YG