



# Viking Fish Farms Ltd

Ardtoe Marine Laboratory

*Scotland's only commercial  
shellfish hatchery*



Viking Fish Farms Ltd

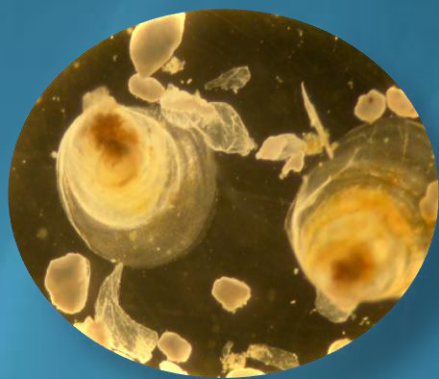
Ardtoe Marine Laboratory, Ardtoe, Acharacle, Argyll PH36 4LD, Scotland

Tel: +44(0)1397 709 270 | fax: +44(0)1967 431 343 email:

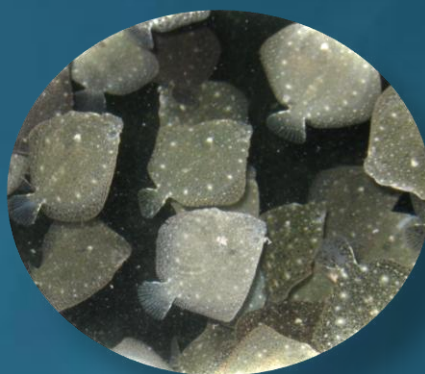
[info@ardtoemarine.co.uk](mailto:info@ardtoemarine.co.uk)

[www.ardtoemarine.co.uk](http://www.ardtoemarine.co.uk) also [www.vikingfish.com](http://www.vikingfish.com)

# Our Production

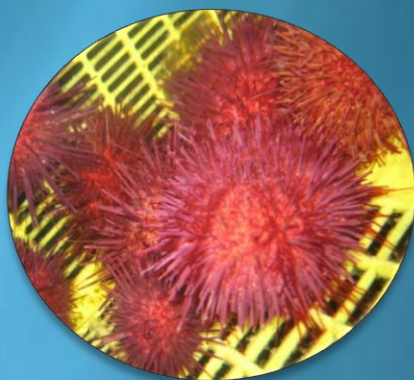


Oyster Spat



Fry production

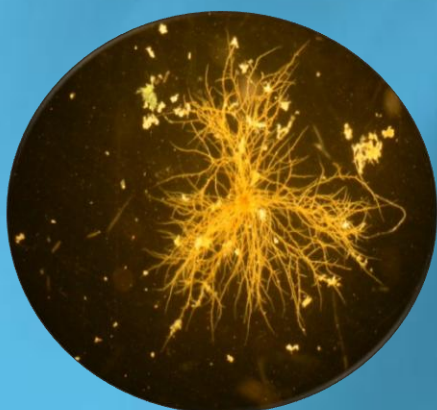
- Turbot
- Cod
- Sole
- Halibut



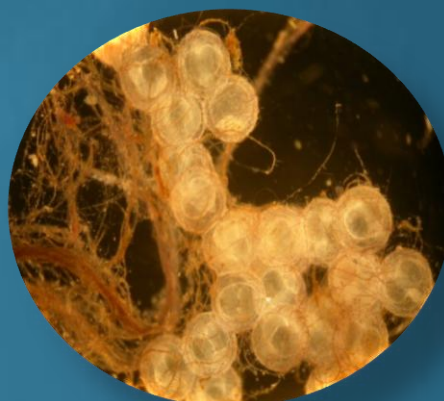
Sea Urchin spat



Wrasse “the cleaner fish” production



Seaweed plants



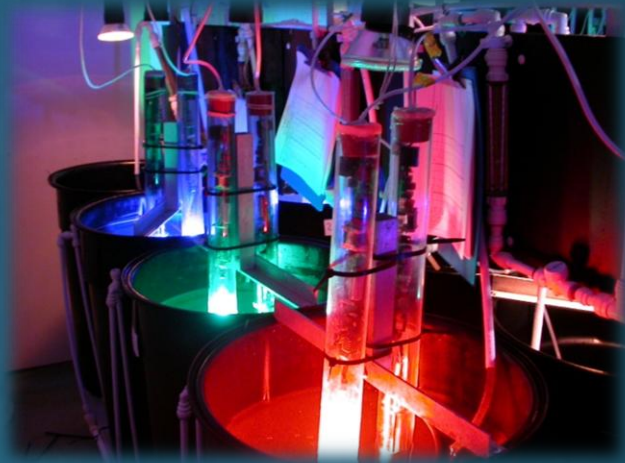
Biological Supply

# Aquaculture Pioneers

---

Since 1965 the Ardtoe Marine Laboratory has been internationally recognised as a world leader in the development of marine aquaculture, science and technology.

This continuing pioneering spirit and an ethos of innovation, makes Ardtoe today one of the most dynamic and diverse organisations within the marine aquaculture.



## An exceptional environment

---



Ardtoe is located in the western Highlands of Scotland, 50 miles from and Ben Nevis and Fort William, which is famed as the outdoor activity capital of Scotland. The laboratory itself is in an isolated location on the Lochaber peninsula, in an area of unspoilt natural beauty, where it benefits from class A quality seawater and a particularly mild climate. Wild otters and various species of seabirds are regular visitors to the lagoon behind the laboratory, and large numbers of red deer roam the hills and glens around. This unique location reminds us every day of the need to maximise the sustainability and minimise the environmental impact of all our production activity.

## Hatchery facility

---



- 120m<sup>3</sup>/hr seawater supply, filtered to 10 microns
- UV treated to over 200 mW/cm<sup>2</sup>
- Intensive indoor cultures of specially selected species of live microalgae
- Environmentally controlled larval rearing system
- Intensive upwelling spat nursery system
- Outdoor mesocosm system for "hardening" spat

## Scotland's only shellfish hatchery

---

Ardtoe is the only oyster spat producer in Scotland, where it benefits from grade A waters free from the oyster herpes virus which is presently decimating oyster production in many areas of western Europe.

Given this, we are able to produce a high quality, guaranteed disease-free spat at various sizes required by the industry.



## A selected broodstock

---



Our breeding stocks are selected best performers from local commercial fish farms. After a period of quarantine and frequent health checks they are conditioned for spawning under controlled conditions whilst being fed on a specially selected range of cultured microalgae that ensures a production of vigorous larvae with high growth potential.

## Controlled production system

Hatched larvae are reared on hatchery produced microalgae and, upon settlement on micro-cultch, are transferred to our intensive upwelling systems for rearing to stocking size.

Throughout this nursery period they are graded at frequent intervals and any poor performing spat discarded.

This tough selection procedure, coupled with the fact that we do not retain any stocks for ongrowing ourselves, means that our customers can be assured of receiving the very finest quality spat available in the market.



## Native and Pacific oysters

We produce two different types of oysters:

- **The flat oyster**  
**(*Ostrea edulis*)**

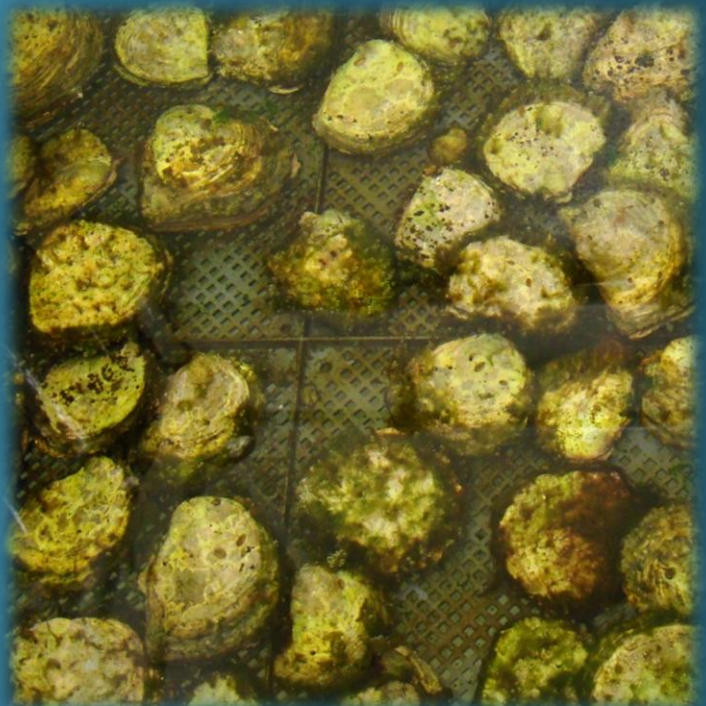
Native Atlantic oyster of our own coast.

- **The pacific oyster**  
**(*Crassostrea gigas*)**

The primary farmed oyster.

All our spat are reared in intensive upwelling systems supplied with filtered and UV sterilised water and fed constantly on hatchery produced phytoplankton.

They are then "hardened off" in outdoor mesocosms before shipment to our customers.



## Contact information for Specification and prices

---

Viking Fish Farms Ltd  
Ardtoe Marine Laboratory, Ardtoe, Acharacle, Argyll  
PH36 4LD, Scotland  
Tel: +44(0)1397 709 270 | fax: +44(0)1967 431 343  
email: [info@ardtoemarine.co.uk](mailto:info@ardtoemarine.co.uk)  
[www.ardtoemarine.co.uk](http://www.ardtoemarine.co.uk) also [www.vikingfish.com](http://www.vikingfish.com)

**Tim Atack - Managing Director**  
**Email: [tim.atak@vikingfishfarm.com](mailto:tim.atak@vikingfishfarm.com)**